

PART OF N.E. 1/4 & S.E. 1/4 OF SEC. 15, T.5 N., R.1 W., S.L.B. & M.

139

SHADOW VALLEY ESTATES NO. 4

LOTS 1-22

IN OGDEN CITY

SCALE 1" = 60'

TAXING UNIT 25

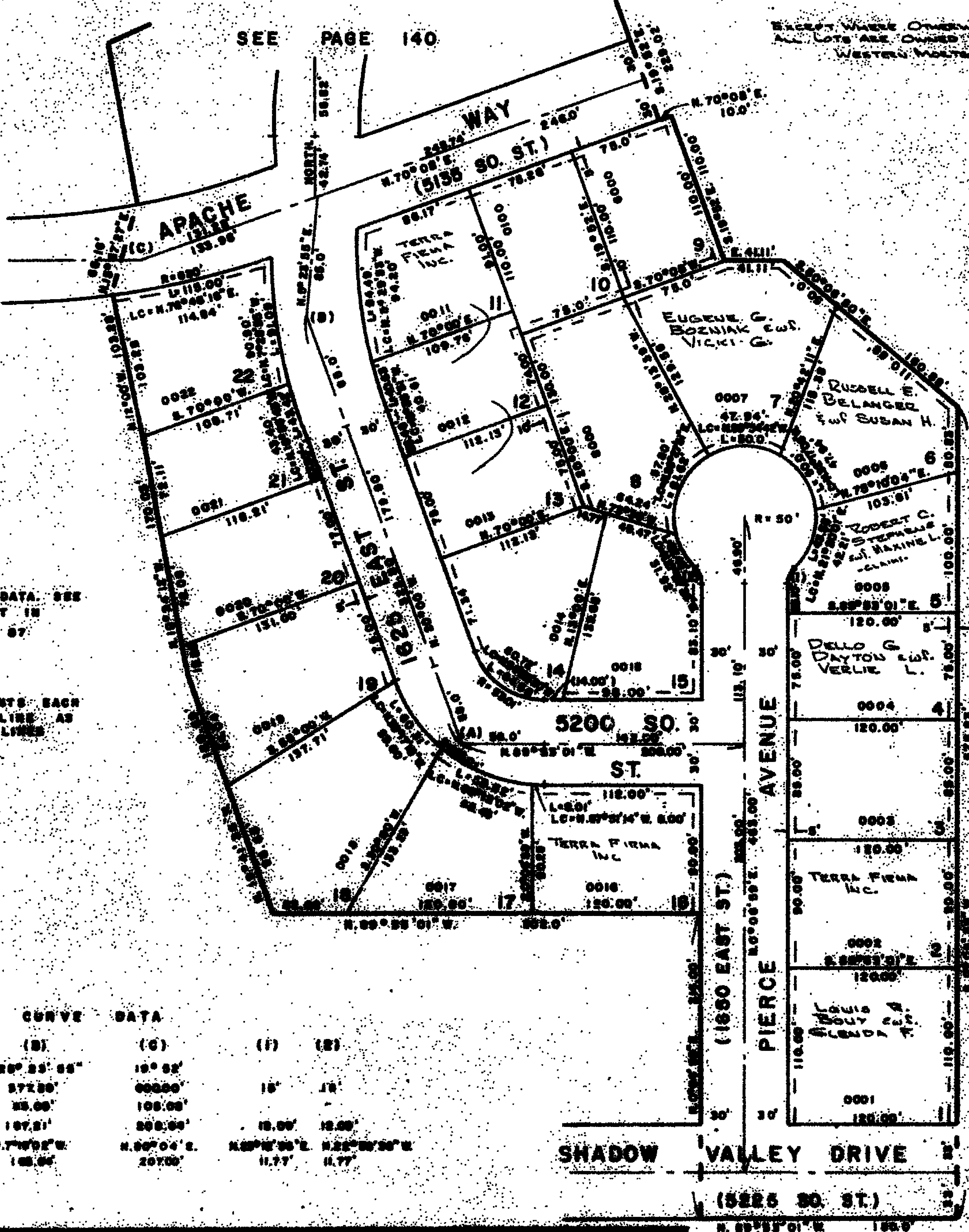
PREFIX 07-139

SEE PAGE 140

EXCEPT WHERE OTHERWISE SHOWN
ALL LOTS ARE OWNED BY
WESTERN MORTGAGE LOAN CORP.

NOTE:
FOR COMPLETE ENG. DATA SEE
ORIG. DEDICATION PLAN IN
BOOK 18, PAGE 87

5' UTILITY EASEMENTS EACH
SIDE OF PROPERTY LINE AS
SHOWN BY DASHED LINES



CURVE DATA

(A)	(B)	(C)	(F)	(E)
$\Delta = 89^{\circ}55'01''$	$28^{\circ}25'55''$	$19^{\circ}52'$	$15'$	$18'$
$R = 85.01'$	$57.28'$	$60.00'$		
$T = 58.00'$	$35.00'$	$100.00'$		
$L = 101.28'$	$187.21'$	$200.00'$	$15.00'$	$18.00'$
$L.C. = N.89^{\circ}55'01'' E.$ $98.00'$	$N.7^{\circ}42'22'' E.$ $105.00'$	$N.80^{\circ}04' E.$ $207.00'$	$N.80^{\circ}04' E.$ $11.77'$	$N.24^{\circ}00'00'' W.$ $11.77'$